

# Precision & Elegance for Your Patio Doors

Enhance your living with Gee Bridge's Patio Door Hardware. Our premium materials ensure smooth operation and durability, even in harsh weather. Designed to complement any patio aesthetic, Gee Bridge combines strength with sleek design. Trust Gee Bridge for functionality and style.



## Patio Door Hardware Solution

**Gee Bridge - Crafting Warm Metal with Artisanal Excellence**  
Your Trusted Partner for Building Materials and Household Hardware Solutions

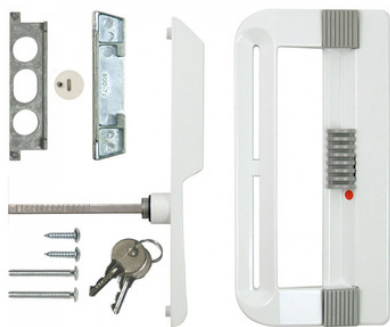
### Patio Door Security Bar

- Minimum Length: 25.75"
- Maximum Length: 47.5"
- Handle Material: Aluminum
- Product Dimensions: 76.8 x 13.7 x 10.6cm
- Weight: 467.2g
- Color: Black, White



### Patio Door Handle Set

- Grey Button & Cover, W/Screws
- Material: Zinc Alloy + Steel
- Finish: White



### Outside Handle with Hole, Locking Cylinder W/tailpiece 3-3/8" retaining ring, nylon locking cam and keylock holding plate

- Material: Zinc Alloy + Steel
- Finish: White



[www.geebridge.com](http://www.geebridge.com)



+886-2-2651-8806



[sales@geebridge.com](mailto:sales@geebridge.com)

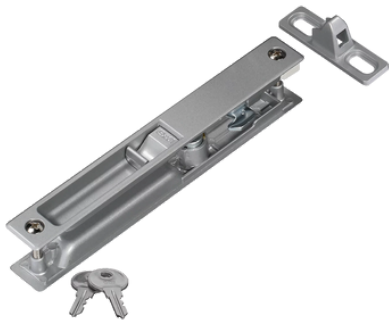
## Patio Door Handle Set

- Material: Zinc Alloy
- Finish: Black, White



## Mortised Locking Patio Door Latch

- Locking patio door latch for 1" to 1-1/4" doors
- 6-1/2" hole spacing
- Includes key for locking mechanism
- Material: Zinc Alloy
- Finish: Aluminum



## Strike

- Material: Zinc Alloy
- Finish: Zinc Plated



## Patio Door Handle/Latch Set

- Size: For 1" to 1-1/4" thick door, 3-15/16" installation hole
- Material: Zinc Alloy + wood handle
- Finish: Silver and wood handle



## Interior Patio Door Handle

- Replacement handle for interior patio doors
- Material: Zinc Alloy + wood handle
- Finish: Silver and wood handle

